

✦ **LAUNDRY TIPS + GUIDELINES** ✦

The washing machine works best when it is not too full. This is also better for your clothing

++++++

Before you use the machine make sure that the previous user has not left any laundry in it. A red sock + whites = pink clothing!

++++++

It is not permitted to use fabric dye in the washing machines

++++++

Urgent! Is your laundry staying in the laundry room for more than a day? The caretakers can/will store it.

There will be a fee to collect this again!

++++++

It's your own responsibility to take out all the laundry right after the wash cycle is finished

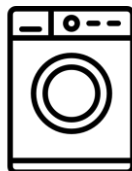
Not able to take out your laundry? Ask a friend or neighbour!

++++++

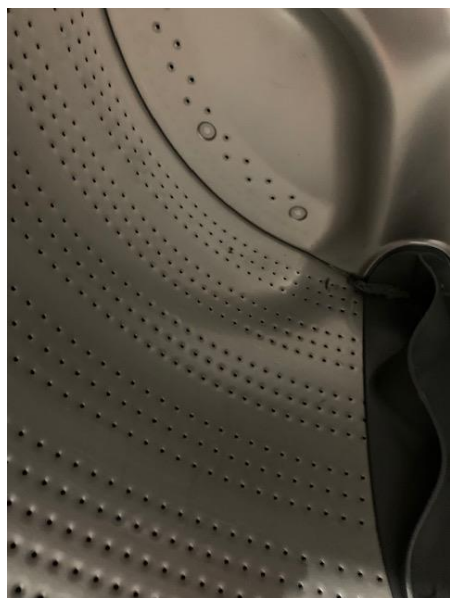
There is a good chance the next user will remove your clothes for you. If you don't feel comfortable that someone else takes out your laundry then you should do it yourself, on time

Tip: set an alarm clock 5/10 minutes before your wash cycle ends so that you are already on your way to get your laundry out!

++++++



LAUNDRY TIPS + GUIDELINES



Make sure you leave the drum empty and clean after using it



Check the black rubber at the opening of the machine. Remove dirt and any other small items that might be left after the run.



LAUNDRY TIPS + GUIDELINES



The inside of the dryer needs to be cleared from dust after your run has been finished. Throw the dust nest in the garbage bin.